



BOSCH
Invented for life

High-pressure pump CPN6

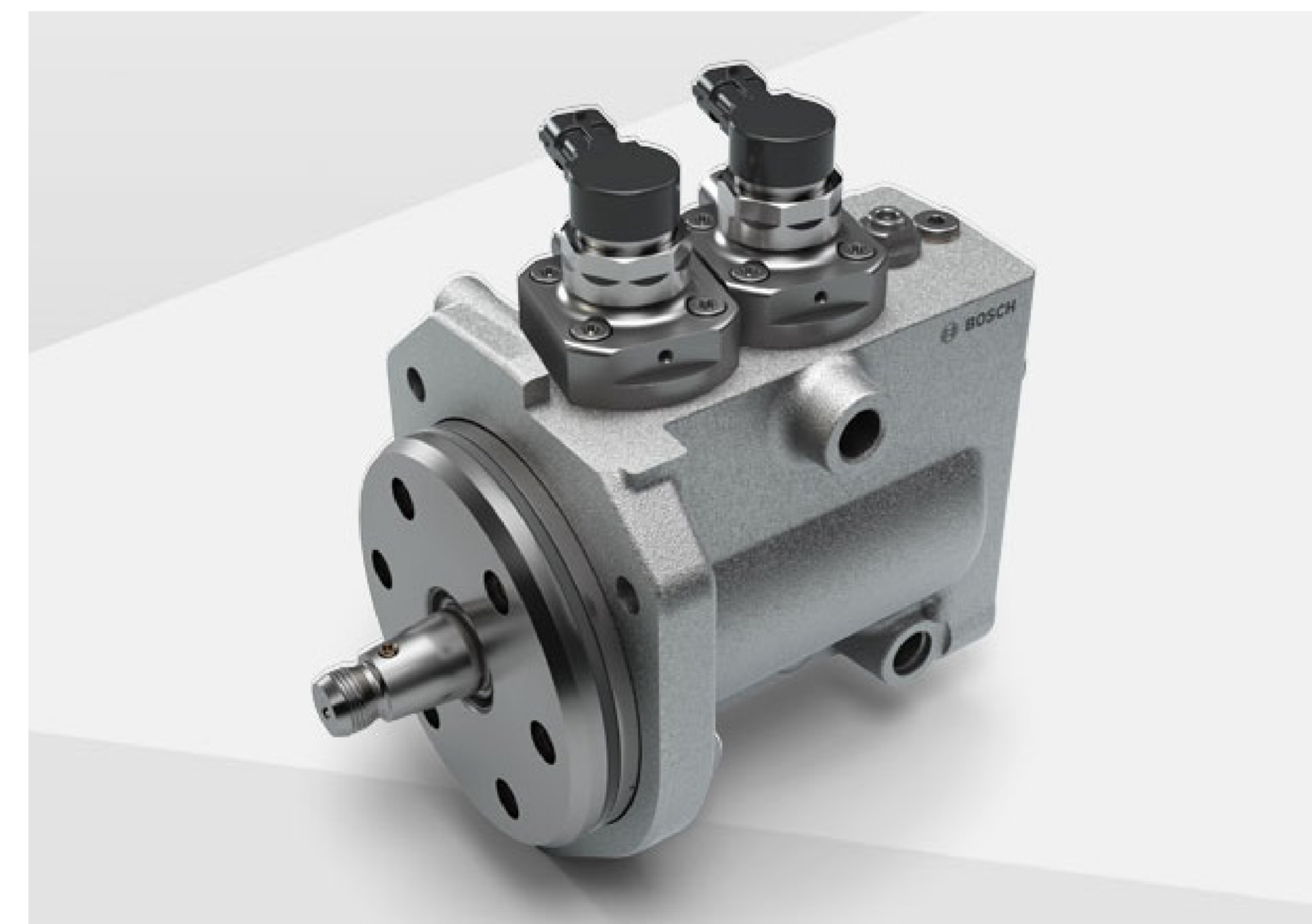
for heavy-duty commercial vehicles, on- and off-highway

Powertrain systems and electrified mobility

Customized variants for a wide variety of applications



CPN6-25/2 GP high-pressure pump
with fuel pre-feed pump



CPN6c-25/2 E high-pressure pump
with electric suction valve

high engine powers

of up to 850 kW can be achieved

- ▶ Up to 2,500 bar system pressure for efficient combustion
- ▶ Customized configurations allow a whole range of different applications
- ▶ High hydraulic efficiency through fuel lubrication
- ▶ Enhanced robustness through oil lubrication
- ▶ Up to 500,000 start/stop applications support hybrid operation

The CPN6 high-pressure pump is based on the heavy-duty Bosch common-rail pumps, which have been produced in millions of units. Designed for heavy-duty applications, the pump handles pressure levels from 1,800 to 2,500 bar and is used for both on- and off-highway.

The variants tailor-made for each segment differentiate themselves regarding lubrication concept, fuel pre feed, fuel metering and maximum delivery quantity.